

FOR LEASE | OFFICE BUILDING

5200 WASHINGTON AVENUE
EVANSVILLE, IN 47715

EXECUTIVE SUMMARY



OFFERING SUMMARY

Available SF:	504 SF
Lease Rate:	\$600/mo. (Gross)
Building Size:	15,978 SF
Zoning:	CO-2
Market:	Evansville, IN
Submarket:	Eastside

PROPERTY OVERVIEW

Situated on Eastside Evansville's highly traveled Washington Avenue, this professional office building is conveniently located with easy access to Green River Road, the Lloyd Expressway (SR 66), I-69 and Hwy 41.

PROPERTY HIGHLIGHTS

- Elevator provides easy access to all 3 levels
- New lighting, carpet and paint
- Ample and convenient onsite parking
- Tenant pays phone and internet only
- Tenants include Weichert Realtors, In-Sight Optical, Reflections Counseling, First on Scene CPR and Gregory Gordon, LCSW

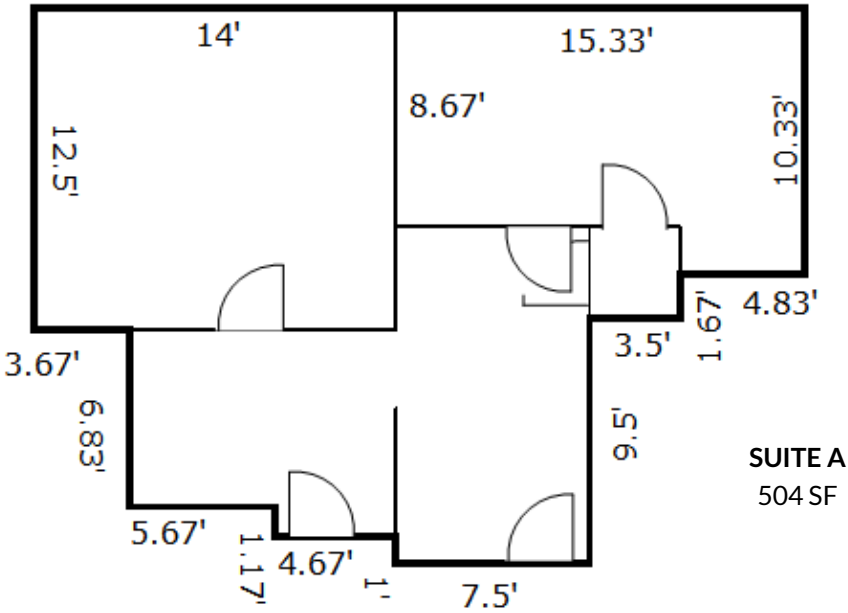
TYLER RABEN
812.568.7800
traben@summitrealestate.us



FOR LEASE | OFFICE BUILDING

5200 WASHINGTON AVENUE
EVANSVILLE, IN 47715

AVAILABLE SPACE



SUITE	SIZE (SF)	LEASE TYPE	LEASE RATE	DESCRIPTION
Suite A (Lower Level)	504 SF	Gross	\$600/mo.	2 private offices, open space/conference area, reception

TYLER RABEN
812.568.7800
traben@summitrealestate.us

